

THE PERENNIAL POST

NORTHWEST PERENNIAL ALLIANCE



WINTER 2018 | VOLUME 28 | ISSUE 1

2018 Hardy Plant Study Weekend



© 2016 David E. Perry. All rights reserved.

Gardening: A Lifetime of Pleasure

Seattle, WA • June 22 to 24, 2018

What is your first memory of gardening? Perhaps as a 5-year-old helping sow seeds in the vegetable garden. Or maybe you were lucky to have a grandmother that shared her love of gardening with you and showed you the magic and wonder found in every leaf, flower bud and visiting bumblebee. Whenever, however your love of gardening arose, it is a passion that is shared by many. The 2018 Hardy Plant Study Weekend conference is about reveling in all aspects of gardening from plants to people: it all adds up to "A Lifetime of Pleasure".

Every four years, NPA hosts the Hardy Plant Study Weekend conference. The event rotates with our friends in the Hardy Plant Society of Oregon in Portland and the Hardy Plant Groups

of Vancouver and Victoria in British Columbia. The weekend is full of top-notch speakers, stunning and inspiring gardens to visit, plant sales from specialty nurseries and a fantastic, fun-filled evening at the Saturday night dinner party.

Learn more about the 2018 Hardy Plant Study Weekend
on pages 8, 9 and 10.

Details and updates will also be online at www.n-p-a.org under Study Weekend 2018.

MEET THE SPEAKERS AT STUDY WEEKEND

Lectures and plant sales will be held at Cascadia College in Bothell. Both of these activities will be held on Friday evening, Saturday morning and Sunday morning.

Speakers include:

Jimi Blake

Jimi Blake is a plantsman, gardening consultant, lecturer and creator of Hunting Brook Gardens in Wicklow, Ireland. Jimi was trained as a horticulturist in the National Botanic Gardens in Dublin and appointed Head Gardener



at Airfield House in Dundrum, Dublin, for twelve years before moving on to his current challenge. He is in the process of developing his vision of a dynamic and innovative garden on his 20 acres at Hunting Brook Gardens. The Gardens are one of Ireland's largest private collections of plants with many examples of the fiercely colorful and theatrically beautiful, large-scale planting combinations for which Jimi has become so well known. He continues to expand his plant collection, use his garden as a classroom and share his passion and knowledge with the public.

continues on page 8



JANUARY 20	Growing Mushrooms at Home workshop with Tristan Woodsmith, Saturday, 10 am – 12 pm, Aaron Education Center at Bellevue Botanical Garden* (See page 11)
JANUARY 21	Promise of Spring Event – NPA Open Gardens Highlights , Sunday, 11:30 am – 12:30 pm (Plant sale –10:30) Foliage First lecture, with Karen Chapman , 1 pm – 2 pm, all events at BBG (See page 3)
JANUARY 25	2018 Hardy Plant Study Weekend registration opens for NPA Members only at www.n-p-a.org
FEBRUARY 1	2018 Hardy Plant Study Weekend registration begins for public
FEBRUARY 7-11	Northwest Flower & Garden Show , Wednesday – Saturday, 9 am – 8 pm, Sunday: 9 am – 6 pm, Washington State Convention Center, Seattle (See page 13)
FEBRUARY 15 & MARCH 15	Border Weed & Feed , third Thursdays, 10 am - noon. Work two hours in the Border at BBG, then enjoy a potluck lunch (see page 12, Volunteers)
MARCH 3	Hydrangea How-To class with Kit Haesloop, Saturday, 10 am – 12 pm, Aaron Education Center at Bellevue Botanical Garden* (See page 11)
MARCH 10	March Mania Plant Sale , Saturday, 9 am – 3 pm, Aaron Education Center at Bellevue Botanical Garden* (see page 7)
MARCH 25	Nicolay Lecture with Kelly Dodson & Sue Milliken , Sunday, 1 pm (Plant sale opens at noon), Aaron Education Center at Bellevue Botanical Garden* (See page 11)

* Aaron Education Center at Bellevue Botanical Garden (BBG) address: 12001 Main Street, Bellevue, WA 98005



2018, Another Banner Year for NPA *Time to Join or Renew*

Katie Padwick
and Jan Jensen,
Membership Co-Chairs

It's time to renew your NPA membership to ensure you don't miss any of the gardener's delights awaiting you next year.

One of the main reasons people join NPA is for access to the many **Open Gardens** you can visit from May through September, and we are constantly seeking to widen the scope of these gardens to include areas outside the Western Washington area. Another popular benefit is joining one of the increasing number of **Neighborhood Groups**, where we can share our gardening struggles and triumphs with our peers during monthly meetings.

And don't forget the free-to-members **special lectures**, by horticultural experts, which are spread

throughout the year. Only the annual Nicolay Lecture, held in the spring, has a nominal \$5 fee for members. Keeping us all informed of these wonderful events is the **n-p-a.org website** and the **Perennial Post newsletter** which also includes articles of interest by our members. Don't miss Gayle Richardson's bracing Book Reviews!

NPA's two annual **Plant Sales** draw not only NPA members but a large segment of the gardening public. The **NPA Perennial Border at the Bellevue Botanical Gardens** not only provides a beautiful example of plants suited to our area but also affords opportunities for hands-on learning for NPA volunteers who assist our professional gardeners.

Perhaps most exciting of all, 2018 is the quadrennial year when Seattle plays host to the **Hardy Plant Study Weekend**, from June 22-24, in Mobius

Hall at Cascadia College in Bothell. Yet more gorgeous gardens will be opened for this event. Tickets will go on sale for members on January 25 – see details on pages 8–10 and on the website.

Many of our business members give **discounts** to NPA members. Check our website for the most current offers available. Our **Seed Exchange** is famous in gardening communities, with requests coming from out of state and even from other countries. Lastly, NPA gives back to the Washington horticultural sector by offering an annual **scholarship** to a student enrolled in this field of study.

It's easy to renew online at www.northwestperennialalliance.org. You can pay with your credit card, or download a membership form and mail it with a check.

NPA's "The Promise of Spring" Event

Come to this event to bask in the beauty, creativity and diversity found in the gardens of NPA members. Be inspired, gain new insights and ideas from NPA's open garden hosts and professional garden designer, Karen Chapman. Be energized and ready for your own garden this Spring.

SCHEDULE

10:30 am – 11:30 am

Plant sale of Hellebores and other winter bloomers

11:30 am - 12:30 pm

NPA Open Gardens:

Highlights of the 2017 Garden Tours and gearing up for the 2018 season with Donna Bogumill and Julia Graham

Break - 12:30 pm - 1:00 pm

1:00 pm - 2:00 pm

Foliage First with Karen Chapman

After lecture - Book signing with Karen

Books may be purchased with cash or checks (not credit card). Special discounted pricing:

Foliage First (NEW!)	\$25 includes tax
Fine Foliage	\$17 includes tax
Both books	\$40 includes tax

Date: Sunday, January 21

Time: 10:30 am - 2:30 pm

Location: Aaron Education Center at Bellevue Botanical Garden
12001 Main Street, Bellevue, WA 98005

Fee: NPA members free
Non-members \$15



NPA Open Gardens: Highlights of the 2017 Garden Tours

...and gearing up for the 2018 season with Donna Bogumill and Julia Graham

11:30 am - 12:30 pm

Open Gardens is the most popular benefit of membership in the Northwest Perennial Alliance (NPA). What could be more fun than spending a day visiting gardens, engaging with other passionate gardeners, gathering ideas and inspiration, and discovering some new must-have plants? This presentation captures that experience through a photo tour of many of the 100 gardens opened in 2017. Most of these are private gardens not usually open to the public. Join Donna Bogumill and Julia Graham, NPA's Open Gardens Directory Co-Editors, as they take you on an awe-

inspiring tour of NPA's Open Gardens of 2017.

The diversity of the gardens was astounding – from tiny urban treasures to sprawling country estates, dry desert gardens to tropical jungles to colorful perennial borders, newly minted gardens and those developed as a labor of love spanning 30 years or more. All of the gardens reflected the unique personality and generosity of the garden hosts.

Tucked into the gardens, visitors discovered great ideas for design, fabulous plant combinations, water features,

potting sheds, pathways, garden art, miniature gardens, plant labels, and so much more. Many of these will be highlighted in the presentation.

If you missed any of the gardens, or would like to revisit your favorites, here's your chance.

What's next? Learn how you can be part of the upcoming 2018 Open Gardens season.

Cindy Stockett garden—Vashon



Foliage First with Karen Chapman

1:00 pm - 2:00 pm

Does your garden look exciting even when nothing is in bloom or does it just become a muddled sea of green? Learn to establish a framework using interesting foliage before layering in additional elements such as bark, berries, flowers and more to breathe new life into your landscape and containers. Award winning author and landscape designer Karen Chapman will offer inspirational ideas for all four seasons.

Born in England, Karen grew up with a trowel in her hand. After moving to the Pacific Northwest in 1996, she established her own garden design business, Le Jardinnet, in 2006. Initially specializing in custom container gardens, Karen now applies that same attention to detail by designing functional and artistic landscapes. Her designs have been featured in many prestigious publications, including *Fine Gardening*, *Sunset* and *Better Homes & Gardens*. Karen's aim is always to inspire, educate and share the fun of gardening with her audience.

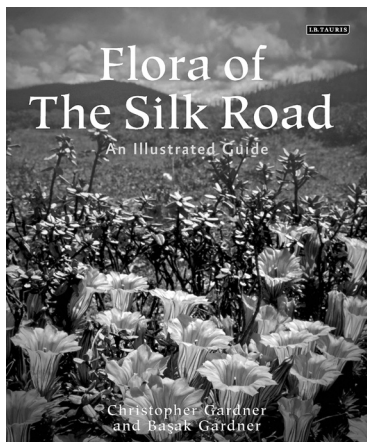
BOOK *Reviews*

Gayle Richardson

The Flora of the Silk Road: An Illustrated Guide

by Christopher Gardner and
Başak Gardner

This coffee-table tome (6.6 pounds!) turns out to be one of the most glorious, memorable books this reviewer has ever seen. This book will make you slaver. This book will give you wanderlust. But mainly, this book will just make you want to weep—at the apparent worldwide unavailability of so many of the stupendous plants it portrays. Though some are old friends (*Lilium regale*, *Dictamnus albus*) and some the NPA can even sell you seed of (*Gentiana asclepiadea*) there are others you will mourn forever not having in your plots. I'm talking about YOU, *Iris westii*, and YOU, *Gentiana arethusae*! Do NOT miss discovering this book.



Seven Deadly Sins of Gardening and the Vices and Virtues of Gardeners

by Toby Musgrave with Mike Calnan

One of those amusing little compilations the British are so good at—nothing you really NEED to read, but then you dip into it, and the next thing you know, quite a bit of time has elapsed. Entertain yourselves with anecdotes about hedges said to be clipped in the shape of Shirley Bassey's derriere, a head gardener so apoplectic he sends his Duchess employer a furious letter rebuking her for plucking 'his' grapes without permission, and the duke with such wealth he devotes an entire greenhouse to just his cucumbers.

The Bold Dry Garden: Lessons from the Ruth Bancroft Garden

by Johanna Silver

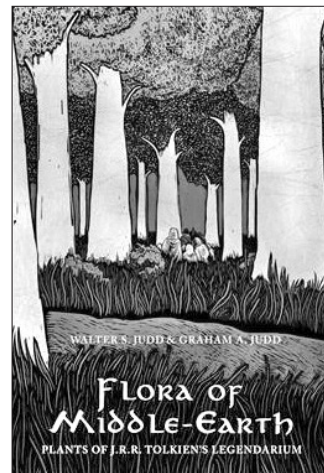


Ruth was 63 when she started planting her Eastbay Area ex-orchard. When she opened it to the public 20 years later it was a widely acclaimed succulent garden and the one which inspired the creation of the Garden Conservancy. In a chatty manner this handsome book presents the details of her life (distinguished family) and ever-growing passion for succulents from ever-expanding geographic sources. Unlike the Silk Road trip recommended above, this one is DOABLE. One round trip ticket to Oakland, BART to the Walnut Creek stop and a 2.5 mile taxi ride to the garden. Late April might be nice...or, at the very least, settle in with the book and raise a glass to the garden and to Ruth, who celebrated her 109th birthday last September 2nd.

Flora of Middle Earth: Plants of J.R.R. Tolkien's Legendarium

by Walter and Graham Judd

A father (Walter Judd, a flowering plant biologist) and son (Graham Judd, a print maker) offer a compilation that is the absolute definition of the phrase 'labor of love.' Some 350 pages cover, in minute detail, the 140 plants, "nearly all of them real" in the saga. Fun to browse through for the gardener (did you know we should all be saying 'nasturtians?') but the ultimate book for the ultimate, dyed-in-the-wool Tolkien fan.



Botanical Style: Inspirational Decorating with Nature, Plants and Florals

by Selina Lake

Despite being seemingly aimed at the rankest of beginners (she gives a definition of a greenhouse), and her repeated description of cacti as tropical plants, there's much to drool over in this colorful exploration of botanically based decorating. Lake is spot on with her observation that the best of all backgrounds for this type of art is a black wall, and the photos bear it out. Do we DARE? Even if we don't, there are countless alluring vignettes, botanical prints to hanker after and instructions for two projects -- tea towel and sofa cushion - that look like they'd be good fun for Neighborhood Groups to tackle at a meeting.

Fellow NPA Members Would Love to Visit Your Garden!

Touring the gardens of other NPA members and sharing ideas with fellow gardeners is one of the favorite pastimes of NPA members. The NPA Open Gardens Program is the most popular and special benefit of membership in our unique organization. We are fortunate to have members graciously willing to share their personal garden creations with us. Won't you join the ranks of NPA garden hosts for the 2018 Open Gardens season? Your participation will help ensure the continued success of our much-loved Open Gardens program.

You may ask yourself: Is my garden worth visiting?

The most wonderful thing about gardens is that there are as many different styles as there are gardeners, as many different tastes as there are forms of artistic expression. It doesn't matter what kind of a garden you have – small or large, formal or cottage, rural or urban – it will be different from all other gardens in the Directory and people will want to visit. If you collect unusual plants, people will want to see those! If you are an enthusiastic composter and green gardener, you will inspire others! If you make your own yard art from repurposed thrift store finds, people will want to copy you! If you have a tiny city lot but manage to grow enough vegetables for your family of five, we should all see that! Something you have or do, even something you think of as ordinary, may be the very thing that sparks another gardener's interest and imagination. Without a doubt, something you created will be the inspirational seed that's planted in another's garden.



Garden of David and Laurie Brenner, Seattle

So, whether you are a veteran gardener or an enthusiastic beginner, an old hand at showing your garden or a rookie, we would love for you to share it with us. Should you have any doubt about opening your garden because you think that it needs to be “finished”, consider that gardeners learn as much from works-in-progress as from the “final” version (if indeed there is such a thing).

Thinking about opening your garden?

It's easy. Just download the Open Gardens registration form from the NPA website at <http://www.northwestperennialalliance.org/opengardens.php>. Fill it out and email it to npaopengardens@gmail.com. Please submit your registration as early as possible, preferably in January. The deadline is February 14, 2018.

Check out the Open Gardens page on the NPA website for other helpful resources for garden hosts, including guidelines for completing the registration form and a checklist to help you prepare for your Open Garden event.

If you have any questions or need more information, email us or call the NPA office at 425-647-6004. If you need a paper version of the registration form, we can send it to you.

Take a leap and be an NPA Open Garden Host! We look forward to visiting you in your garden.

Preparing to Register for an Open Garden

So, you have decided to take the plunge and open your garden for your fellow NPA members. What's next? Following is a list of considerations for preparing to register. More complete guidelines and the registration form are available on the NPA website at <http://www.northwestperennialalliance.org/opengardens.php>.

☼ Membership

To open your garden, you must be a current NPA member. Please make sure you are up-to-date with your membership dues for the current year when you submit your registration form. It's easy to renew online at <http://www.northwestperennialalliance.org/join.php>.

☼ Register early!

If at all possible, submit your registration early, ideally in January. This allows time for the Open Gardens team to: 1) recruit additional gardens in your area, if needed; 2) coordinate dates with other garden hosts; 3) make sure that the information in the Directory is accurate and best represents your garden; and 4) get the Directory pulled together, printed, and mailed to members by early April.

☼ The more, the merrier

Tours of four or more gardens in a given area tend to bring more visitors. The Open Gardens team works with garden hosts to set up tours based on geographic areas. You can help. If you have friends or neighbors who are gardeners, or if you're part of an NPA neighborhood group, talk to them about opening their gardens at the same time as yours. If they're not yet NPA members, we can help them get signed up.

☼ Choose your days and hours

Traditionally, gardens are open Saturday and Sunday, although some open for only one day. It is best to be a little flexible in case dates need to be negotiated between you and the other garden hosts on your tour. The standard hours are 10 a.m. to 4 p.m., but you can specify a different time frame. Feel free to open more than once in a season. You can also open your garden by appointment in addition to your tour days or by appointment only.

☼ Email the Open Gardens team

If you have questions or need more info, email us at npaopengardens@gmail.com. We receive hundreds of emails over the course of the Directory's production. To ensure you get the attention you deserve, please add your name to the subject line (for example, "open garden John Doe").



Garden of Francine Herrgott, Camano Island

March Mania Plant Sale!

Saturday, March 10, 9 am – 3 pm

Bellevue Botanical Garden Aaron Education Center
12001 Main Street, Bellevue, WA 98005



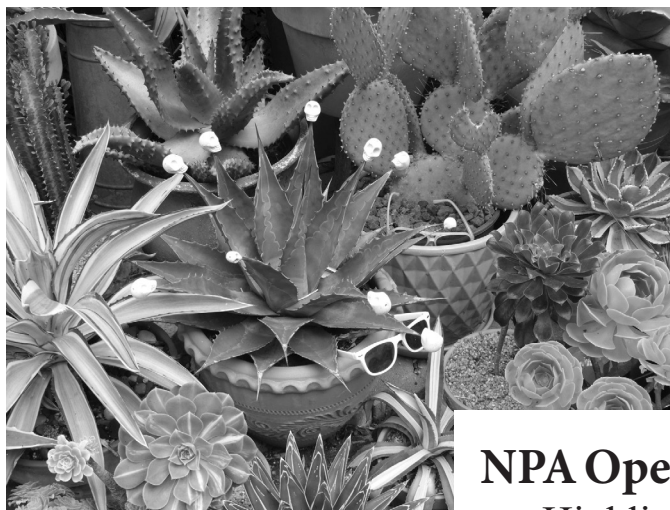
Once again, we are delighted to offer our ever popular March Mania plant sale indoors at the Bellevue Botanical Garden Aaron Education Center. Rain or shine, you will be able to browse the unique offerings indoors, out of the elements.

While at the BBG, you'll observe a major change west of the education center: the large grass area has been converted to an urban meadow. This can provide ideas if you are considering converting a grass area of your home.

Another area of inspiration is the rock garden, easily seen through the south-facing windows from our plant sale. It has been undergoing renovation, expanding plantings and providing increasing interest.

This is a great way to support the NPA, chat with our knowledgeable vendors, and look for that special, must-have plant. Our fabulous group of exceptional vendors, many of whom are not generally open to the public, include: **Botanica, Bouquet Banque, Fancy Fronds, Growing Girls, Lee Farm and Windcliff.**

Peter Herpst, Tacoma



John McWilliams & Tom Gorz, Burien



NPA Open Gardens: Highlights of the 2017 Garden Tours



Annette Barca, Greenbank



Karen Decker, Renton

2018 Hardy Plant Study Weekend

Gardening: A Lifetime of Pleasure

Seattle, WA • June 22 to 24, 2018

Meet the Speakers *continued from cover*



Daniel Hinkley

Dan Hinkley is an author, speaker, teacher, consultant, plant explorer, nurseryman, and creator of renowned Heronswood and the Gardens of Windcliff, where he resides and continues to realize his endeavor. He has written for a variety of horticulture periodicals, authored several books and appeared on television shows as a gardening correspondent. He has spent the past 22 years devoted to introducing rare and unusual plants to North American gardeners by travelling into the wilds of countries such as China, Vietnam, Bhutan, Nepal, South Africa and New Zealand.



June Blake

June Blake, former jeweler and sheep farmer, is a gardener and plantsperson with an international reputation. She is renowned for her

skill with plants, combining them with joyous creativity and a meticulous attention to color, texture and form. Her planting schemes are ever changing and dynamic, flowing gracefully from one season to the next. She is continually experimenting, always keeping light and landscape as part of the equation. Her County Wicklow garden in Ireland, which receives visitors from all over the world, has been called “a piece of poetry in homage to her home place”.



Janice Currie

Janice Currie is a passionate gardener, collector, traveler and plant lover who lives and gardens in Victoria, British Columbia. She is a long-term member of, and contributor to, the Hardy Plant Group in Victoria and is currently the President of the Vancouver Island Rock and Alpine Society. As a frequent traveler, Janice believes that one must see and experience plants in their native environments and uses her travels as a source of new plants and plant combinations. She has spent the past four decades sharing her knowledge and passion with others. Living near the ocean for 25 years, she grew Southern Hemisphere plants in her ideal location. After a recent trip to the Czech Republic, she sold her house and moved to the countryside near Victoria to develop an amazing and innovative alpine crevice garden.



Claudia West

Claudia West is a leading voice in the emerging field of ecological planting design. Known for her passionate advocacy of plant-driven design, Claudia is a widely sought out speaker and consultant who applies the technologies of plant systems to bring essential natural functions back into our cities and towns. She has worked on all sides of the green industry—as a designer, a grower, installer, and land manager—grounding her innovative work in pragmatic solutions that address the realities of our urbanizing world. She is the co-author of the critically acclaimed book, *Planting in a Post-Wild World* (Timber Press, 2015).

Emcee, Nancy Kartes

Nancy Kartes discovered the joys of public gardens through internships as a student at California Polytechnic State University, San Luis Obispo, where she earned her Bachelor's Degree in Ornamental Horticulture. After graduation, Nancy joined the staff of the National Tropical Botanical Garden in Hawaii. In 1992, she

continued to next page

2018 Hardy Plant Study Weekend

Gardening: A Lifetime of Pleasure

Seattle, WA • June 22 to 24, 2018

Meet the Speakers

continued from page 8

was hired by the City of Bellevue Parks & Community Services Department to transform the dreams of local community organizers into a flourishing



**Emcee,
Nancy
Kartes**

botanical garden. Under her leadership, the Bellevue Botanical Garden has grown from a 36-acre property to 53-acres of curated living collections that operate in partnership with nine horticultural organizations. Nancy manages the partnership with the NPA to provide the award-winning NPA Perennial Border at BBG. She takes special delight in fostering this relationship and believes that the success of the NPA and other partner groups is essential to the phenomenal success of Bellevue Botanical Garden.

Nancy recently joined the board of the American Public Gardens Association and is honored by the opportunity to serve in support of the APGA's vision of a world where public gardens are indispensable.

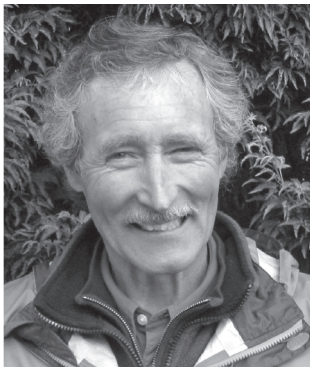


Plant Market

For your shopping pleasure, several specialty nurseries will be at the lecture venue—Cascadia College in Bothell.

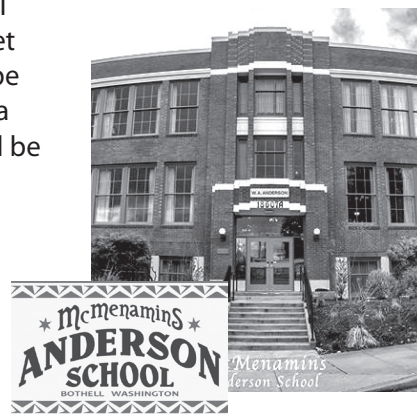
For our Canadian friends, we expect to have Phyto Inspection available.

"Celebrating Life in the Garden" Saturday Soiree



Don't miss out on the fun at the Saturday Soiree at McMenamins Anderson School. We encourage you to dress in your best garden attire. Of course, that is open to interpretation! A full course buffet dinner will be served and a cash bar will be available.

Ciscoe Morris will be the emcee for the after-dinner events, including handing out prizes associated with best garden attire categories.



Study Weekend Open Gardens

Gardens open for HPSW attendees will be localized in areas to maximize garden visitations and minimize travel time between destinations.

Gardens will be clustered on Friday in Puyallup and Woodinville for all day touring. Saturday gardens are open in the afternoon in the Edmonds area. Sunday gardens are open in the afternoon and localized in Seattle. On Monday some gardens will re-open.



Plant Study Weekend continues on page 10

2018 Hardy Plant Study Weekend

Gardening: A Lifetime of Pleasure

Seattle, WA • June 22 to 24, 2018

Study Weekend Registration

Registration begins on January 25 for 2018 NPA members (make sure to renew your NPA membership before January 25) and opens to the public on February 1. You must register online for the Study Weekend event. Watch for the email updates from NPA. Registration will be at NPA's website: www.n-p-a.org.

Study Weekend registration includes lectures, coffee breaks, garden tours, and access to plant sales. Registration is per person and does not allow non-registered guest or spouse access to gardens. Saturday Soiree registration is per person.

- **This event is limited to 400 participants**
- **Registration on or before May 1, 2018 – \$175**
- **Registration after May 1, 2018 – \$200**
- **"Celebrating Life in the Garden" Saturday Soiree buffet dinner at McMenamins Anderson School – \$75**

Registration confirmation will be sent by email.

Cancellation policy is a \$20 fee for each registration cancellation. Cancellations prior to May 22 will receive a refund of the balance after fee. After May 22, your registration cancellation will be considered a donation to the NPA.

As is the case with most Study Weekend registrations: DON'T DELAY. The event often sells out quickly.

Accommodations

NPA has negotiated discount rates at a few hotels in the vicinity. They will be posted on NPA's website www.n-p-a.org under the Study Weekend 2018 section. Hotel accommodations are limited in the immediate vicinity of the conference, so NPA encourages everyone to quickly secure your lodging.

**Details and updates will also be online
at www.n-p-a.org under Study Weekend 2018.**

NPA CLASSES & WORKSHOPS

Winter

Growing Mushrooms at Home

with *Tristan Woodsmith*



Date: Saturday, January 20, 2018

Time: 10 am – 12 pm

Location: Aaron Education Center at Bellevue Botanical Garden, 12001 Main Street, Bellevue, WA 98005

Fee: NPA members \$25
Non-members \$35

Limit: 25 participants

This workshop focuses on growing gourmet mushrooms at home, both indoors and outdoors in your yard, garden or forest. We will discuss the mushroom life cycle, various substrates used for growing mushrooms, and low-tech methods for generating mycelium including spores, spawn, and stem-butts. Indoor mushroom patches, outdoor mushroom beds, and log and stump cultivation will all be covered in great detail. Species mentioned include Oyster Mushrooms, Shiitake, Lion's Mane and more.

Hydrangea How-To

with *Kit Haesloop*

Date: Saturday, March 3, 2018

Time: 10 am – 12 pm

Location: Aaron Education Center at Bellevue Botanical Garden, 12001 Main Street, Bellevue, WA 98005

Fee: NPA members \$25
Non-members \$35

Limit: 25 participants

Learn how to get peak performance from the Hydrangeas you grow or want to grow in your garden from the ever-expanding varieties available. In this class, you will learn the distinguishing traits between species and how best to keep your Hydrangeas beautiful with the proper care. Kit will provide guidance on growing conditions, bloom color and pruning options for the different species.

Finally, Kit will demonstrate proper pruning techniques on several species that grow in the NPA Perennial Border at the Bellevue Botanical Garden. Bring your questions and be prepared to go outside to the Perennial Border in the second half of the class.



NICOLAY MEMORIAL LECTURE

Getting High in Vietnam's Northern Mountains

with *Sue Milliken and Kelly Dodson*



Date: Sunday, March 25, 2018

Time: Doors open at noon for plant sales. **Lecture begins at 1 pm.**

Location: Aaron Education Center at Bellevue Botanical Garden, 12001 Main Street, Bellevue, WA 98005

Fee: NPA members \$5/Nonmembers \$20

Sue Milliken and Kelly Dodson of Far Reaches Botanical Conservancy explored high peaks and ridges in northern Vietnam last fall in search of new plants. This area is a geographical plant convergence zone and one of the world's hotspots of biodiversity. Surprisingly, many plants from this region have a long memory harkening back to colder times and are proving much more hardy than common sense would suggest. Wear your boots – the trails are steep!

Sue and Kelly are collectors, propagators, growers, and owners of Far Reaches Farm in Port Townsend and their newest endeavor, Far Reaches Botanical Conservancy. They are committed to conservation of rare and unusual ornamental plants through education and distribution to gardeners, botanical gardens and for scientific research.

Register Now for NPA Classes

It's easy to register online at www.n-p-a.org or contact NPA at **425-647-6004**. We will be adding more classes throughout the year. Watch your emails, Facebook and future editions of The Perennial Post for details. If you have an idea for a class or workshop or would like one taught on a particular subject, contact Classes & Workshops at classes@northwestperennialalliance.org or call NPA at **425-647-6004**.

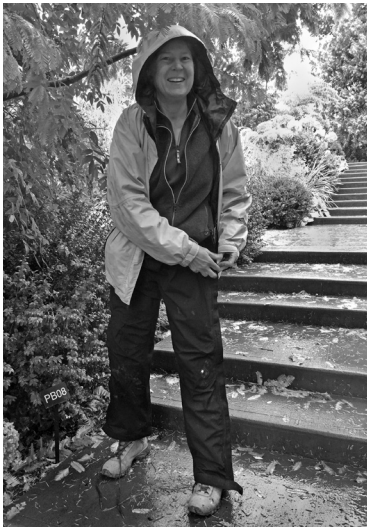
Rainy Day Volunteers, Thank You!

Diana Davidson

It's October. The rain is threatening to come down sideways. Grey clouds are hanging so low we can touch them. It's Thursday morning...wait, it's the THIRD THURSDAY of the month. Time to don the wellies and head to the NPA Perennial Border at Bellevue Botanical Garden.



Jing Chen



Doreen Gillespie

It's autumn; hostas have turned yellow and fallen on the ground, grasses are no longer upright, seed heads are brown and empty. Spurred on by cheerful companionship, our devoted Border volunteers tackle fall clean up, filling several barrels with yard waste. Debbie Roberts, from England, gets on her knees to cut back the astilbes. Jing Chen, from China, is eager to learn about gardening in the Northwest. A little rain falls; we can't stop—look, there's another shrub to clean up just down the path!

And then the best part: Weed and Feed, our Third Thursday Potluck in the cozy volunteer room near the BBG administration offices. What goodies we have, from crumpets to curries. We never know what will appear, and it's all delicious. We are blessed with the chance to get to know people from many places—Sashi Raghupathy from India, and Doreen Gillespie, who grew up in Portland. Enjoying each other's cooking, and good conversation, we forget that we were cold and wet not long before.

You don't HAVE to get wet to be an NPA volunteer. Besides helping at the NPA Border on Thursdays, volunteer opportunities include plant sales, lectures, and being on the board. We do have a few year-round positions that will need new help. To find out more, email volunteers@northwestperennialalliance.org.



Debbie Roberts



Sashi Raghupathy



*Sunny Third Thursday
Border Days Await*

NPA Welcomes Two New Border Supervisors

NPA's Perennial Border at the Bellevue Botanical Garden (BBG) is a showcase for what survives and thrives in Puget Sound gardens. Over 17,000 square feet of plant beds with thousands of perennials, bulbs, grasses, evergreens, shrubs and trees which provide color and beauty year round.

The NPA Border is our gift to the community. It is a source of education and hands-on learning opportunities for NPA members, horticulture students, gardeners and the thousands of visitors that come visit BBG yearly. Additionally, it is one of the largest public perennial gardens in the U.S. maintained entirely by volunteers. To direct and guide the volunteers, NPA employs two Border supervisors; Beth Burman and Cheryl Van Blom, who share the job and cover the year. Beth is the fall/winter supervisor and Cheryl is the spring/summer supervisor.



Beth Burman

years in horticulture. She views working at the Border as a way to contribute to something "larger than one's self." Cheryl enjoys interacting with volunteers, as they come with a wealth of knowledge and talents, and she loves how everyone shares ideas. Spending winters in Mexico makes her the perfect pick for the hot and dry season at the NPA Border.

The famous quote from Aristotle of "the whole is more than the sum of its parts" is definitely true when it comes to the dynamic duo of NPA's new Border supervisors. NPA is thrilled to have such a great Border Supervisor team!

Beth grew up in a gardening family and has worked in the horticulture field for many years as a gardener, grower, propagator, retailer, and wholesaler. She is honored to be a part of the Border group, to both share her knowledge with volunteers and to learn from them and the Garden. Living in North Bend's rain-forest, Beth is a natural for job sharing during the wet season at the Border.

Cheryl has a passion for gardening that is contagious. She generously shares her knowledge of gardening best practices gained from her many



Cheryl Van Blom

Sign Up for Free Admission to NW Flower & Garden Show

February 7 – 11, 2018

Seattle Convention Center



Diana Davidson welcomes visitors

The 2018 Northwest Flower and Garden Show, February 7 - 11, 2018, at the Washington State Convention Center in downtown Seattle is right around the corner. Now is the time to sign up to help at the Northwest Perennial Alliance booth, where we encourage people to join our organization.

This is our strongest venue for sharing the benefits of NPA membership with the public, including OPEN GARDENS. Our enthusiastic volunteers work in pairs for three hour shifts. **And remember -- when you volunteer you will get a show pass that is good for the entire day you volunteer.**

If you can't volunteer but plan to visit the show, be sure to stop by the NPA booth (#2501) and sign up for our drawing to win a garden-related prize.

The earlier you contact our coordinator, the better your chance of getting the day and shift you prefer.

To volunteer, email: volunteernw-fgs@northwestperennialalliance.org.

Announcing NPA's New Administrative Assistant

NPA is excited to announce our new Administrative Assistant, Leola Young. An avid gardener, crafter, tech-savvy, previously self-employed business owner and retired surgical technologist, Leola is well qualified for the role. You will find her kindness and easygoing nature a pleasure to interact with. Perhaps her years in operating rooms has added to the calm she exudes. Few people can say they held someone's heart in their hands while someone else sewed up the other side. Yes, she really did hold someone's heart in her hands while it was being sewn up!

NPA gives Leola a big welcome. We know she will warm all our hearts.

As renewal season begins, Leola will be keeping NPA's membership records in order. She is the voice answering the NPA phone and you will see her at lectures. She will be handling requests and questions that come via email to NPA at info@northwestperennialalliance.org.

You can renew or gift a membership online at www.n-p-a.org or by printing a form from the website and mailing it with a check to NPA, PO Box 1034, Bellevue, WA 98009-1034. Thank you for your membership.



Leola Young, NPA
Administrative
Assistant

Apply for an NPA Scholarship

Do you know a deserving horticulture student who would appreciate a little help with tuition and books? Encourage them to apply for an NPA Scholarship.

This year the NPA will award a \$1,000 scholarship to be used at a two or four-year accredited college or accredited trade school within the academic year following receipt of the scholarship. Applicants must be enrolled as matriculated students pursuing education in horticulture, botany, landscape design/architecture, or environmental science. Funds are paid directly to the school that the recipient will be attending, and these funds may only be used for tuition and books.

The scholarship recipient also receives a one-year membership in the NPA. Applicants can download the application form on the NPA website at <http://www.northwestperennialalliance.org>. The deadline for applications is May 15, and funds are available in June.

Preparing Your Garden for Winter

Garden clean-up for winter is often a matter of personal preference, available time and tolerance of cold. However, some garden clean-up in the winter is beneficial towards a healthier garden in the spring reducing diseases, overwintering pests and allowing for better drainage during the rainy season. Here are a few key tasks to accomplish in your garden this winter, if you haven't already done so.

- Cut-back stems of plants such as herbaceous *Peonia* hybrids, *Crocus* and *Hemerocallis* (Daylily).
- Rake and remove large leaves such as Big-Leaf Maples and Magnolia, as the leaves on the ground hold moisture leading to rot of the plants underneath.
- Remove leaves that have fallen on shrubs such as conifers and other evergreens such as the *Daphne* pictured at right.
- Remove Hosta leaves and stems. They turn to mush and can hold in moisture.
- Cut-back *Alchemilla mollis* and *Aquilegia* to about three inches. Prune too close and you may damage the forming buds.
- After you have finished your clean-up, you will discover that spreading mulch in the winter is much easier than in the spring, when you have to dance around emerging plants and risk smothering the crowns.



Daphne in the NPA Border. Photo by Linda Gray

Aren't we fortunate to live where we can garden year-round, if we so desire! Happy Gardening!

MEMBERS' CORNER

Winter

Meet NPA's Newest Board Member

Lucinda Capers, our newest board member, has been a lifelong gardener. By the age of ten, her non-gardening parents were talking to her about being a horticulturist. Instead she chose a career in International Business with the Pacific Basin as her focus. Traveling allowed her to visit the temples and gardens in Kyoto and the Imperial Garden in Tokyo, Japan, the Singapore Botanic Garden and many others. After 40-plus years of living and gardening in California, she and her husband, Jerome, moved and retired on two acres on Fox Island.



New Board Member, Lucinda Capers

Since retiring she has hosted many garden tours of their property, chaired the Fox Island Garden Tour, done numerous fundraising projects and served as president of Arboretum Unit 98 for three years. Currently she is a member of the Gig Harbor NPA Harbor Gardeners neighborhood group and finds being on the NPA Board full of enjoyable and interesting projects and interactions.

NPA currently has open positions on the Board. NPA is full of talented, energetic and enthusiastic members. Don't be shy, we need you to come forward and share your skills to help keep NPA blooming!

Call NPA at 425-647-6004 or email board@northwestperennialalliance.org.

Eastside Group Openings

Attention NPA members - the Mercerbelles Neighborhood Group is now open to new members! This group includes Mercer Island and Bellevue areas. It meets on the 3rd Wednesday of each month at 1 pm. If you are interested, please email groups@northwestperennialalliance.org.

Training for New Neighborhood Group Coordinators

Coming in 2018 - due to overwhelming demand, NPA needs to create more Neighborhood Groups! If you think you might want to start a group, or even if you are just wondering about the possibility, we will be offering a "Training for New Neighborhood Group Coordinators", meeting sometime in February. More details to come! If you think you might be interested, please email groups@northwestperennialalliance.org.

2018 NPA Board of Directors

President	Kit Haesloop
Vice President	Diana Davidson
Treasurer	Trish Brooks
Secretary	Denise Hartzell

Directors at Large

Lucinda Capers
Denise DuBose
Jan Jensen
Linda Kline
Kathleen Neal
Katie Padwick

NPA Advisory Board

Kelly Dodson	Sue Moss
Val Easton	Chitra Parpia
Roger Gossler	Charles Price
Pam Harper	Debra Prinzing
Dan Hinkley	Barbara Swift
Thomas Hobbs	Joanne White
Nancy Kartes	Glenn Withey
Denise Lane	Barbara Wright
Linda McDonald	

Northwest Perennial Alliance

The Northwest Perennial Alliance is a community of friends, neighbors and experts who share a passion for gardening in the Pacific Northwest. Everyone is welcome.

Website: www.n-p-a.org

Phone: 425-647-6004

Email: info@northwestperennialalliance.org

NPA 2017-2018 Officers:

Kit Haesloop, President: 425-333-6529

Diana Davidson, Vice President: 425-896-8040

Denise Hartzell, Secretary: 708-415-5287

Trish Brooks, Treasurer: 360-579-2030

Membership:

Memberships are \$40 for individuals, \$50 for households, \$80 for businesses, \$25 for students. The membership year runs from January-December. To join, visit www.n-p-a.org to pay electronically or download a membership form. You may also mail a check payable to NPA, to the address below. Include your name, mailing address, email address and telephone number. NPA accepts certain credit cards and debit cards by telephone at 425-647-6004.

Donations:

NPA is a registered 501(c)(3) nonprofit organization and your donations are tax deductible to the extent allowable by law. Donations are used to support our educational programs, including Open Gardens, lectures, workshops, the NPA Border and student scholarships.

Submissions and paid advertisements:

Contact the Post Editor at post@northwestperennialalliance.org

The Perennial Post is published by:
Northwest Perennial Alliance
PO Box 1034
Bellevue, WA 98009

Volume 27, Issue 3
Fall 2017

Co-Editors: Jacqueline Houston
& Jeanne Macdonald
Copy Editors: Sara Drogin, Wendy Lagozzino

Printer: Precision Press, Redmond

All material (c)2017-18 NPA. Reprint by permission only.



THE PERENNIAL POST
Northwest Perennial Alliance
PO Box 1034
Bellevue, WA 98009

www.northwestperennialalliance.org

NON-PROFIT ORG
U.S. POSTAGE
PAID
BELLEVUE, WA
PERMIT NO. 168

2018 Hardy Plant Study Weekend

*Gardening:
A Lifetime of Pleasure*

Bothell, WA • June 22 to 24, 2018

See Cover – See Inside!

March Mania is coming Saturday, March 10!



**MARCH MANIA
PLANT SALE**
March 10, 9 AM – 3 PM
**Bellevue Botanical Garden
Aaron Education Center**

12001 Main Street
Bellevue, WA 98005
See page 7

